



RIVERMARO

SAN CARLOS

Playa El Palmar



Fun and beach for the family



2 km away from the beach



Quick access to the river



**YOU NEED
A BIT MORE OF**

*Jungle in
your Life*



FABRIKA URBANA



RIVERMARO is a Country Houses project with 55 lots ranging from 600 m² to 1,200 m² located 4 minutes away from El Palmar Beach and only 1.5 hours from Panama City, situated in a premium area of San Carlos.

- Just 2 km away from El Palmar Beach
- Close to restaurants and other points of interest
- Only 3 minutes from the Inter-American Highway
- Well-maintained access roads
- Opportunity to choose the design of your future home

PRE-SALE price starting from:

\$135,700

AMENITIES

- Perimeter fencing with gated access
- Lots with views of the River, Mountains, and towards El Palmar
- Social area with swimming pool



The maintenance fee will start at \$90.00 per month and will increase according to needs.

Kauai Model



The images shown in this presentation are for illustrative purposes only; all graphical and textual information is subject to change without prior notice. Dimensions and furniture are approximate representations and do not constitute a contract or guarantee. All rights reserved.





Kauai Model:

66.30 m2 closed area

17.90 m2 open area

84.20 m2 total excluding parking

- ✓ 2 bedrooms
- ✓ 1 full bathroom
- ✓ Terrace
- ✓ Parking area
- ✓ Kitchen
- ✓ Individual water tank
- ✓ Living room
- ✓ Concrete polished floor
- ✓ Basic gardening included

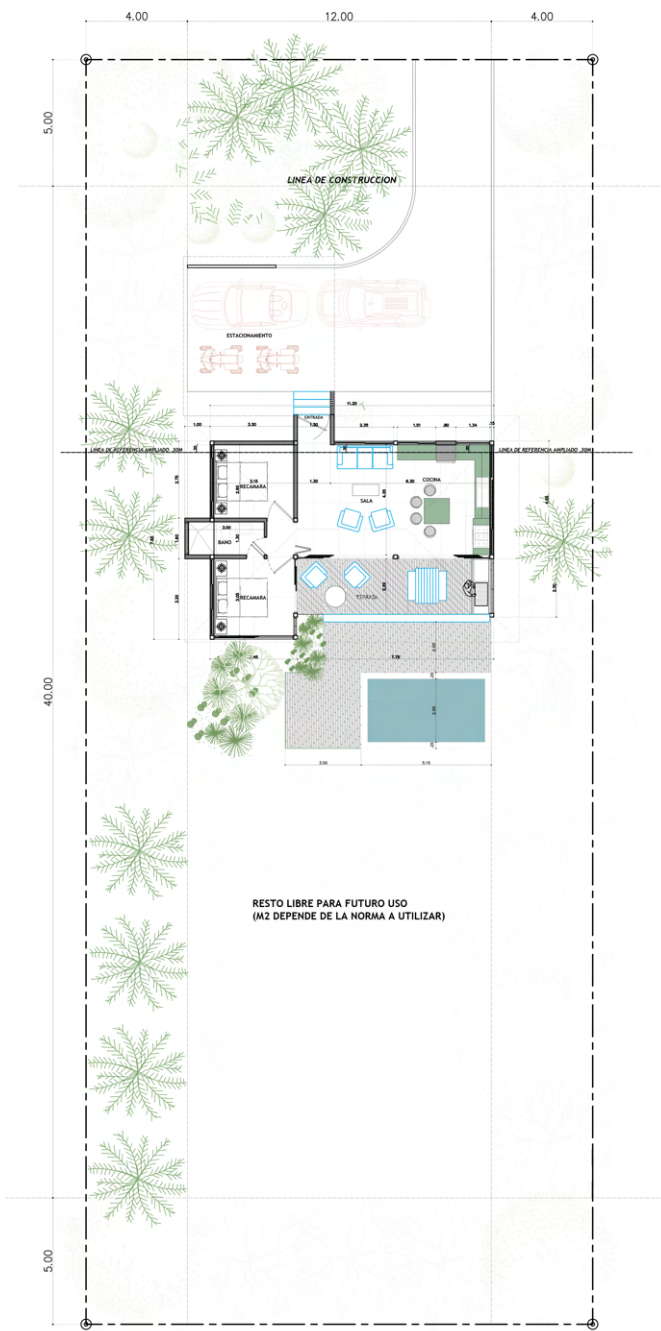
Optional:

- ✓ Pool \$11,700
- ✓ Deck with Solid Teak \$15,700
- ✓ Covered Parking \$15,500

Price starting from **\$135,700** on a **600 m2** lot.

Price starting from **\$159,000** on a **1000 m2** lot.





AREA DE CONSTRUCCION
CASA (AREA CERRADA): 66.30M2
TERRAZA (ABIERTA): 17.90M2
TOTAL: 84.20M2

- ESTACIONAMIENTO:**
37.00M2 TEJADO
- DECK PISCINA:**
24.00M2 DECK
- PISCINA:**
15.40M2 DECK

RESTO LIBRE PARA FUTURO USO
(M2 DEPENDE DE LA NORMA A UTILIZAR)

Modelo O´AHU



The images shown in this presentation are for illustrative purposes only; all graphical and textual information is subject to change without prior notice. Dimensions and furniture are approximate representations and do not constitute a contract or guarantee. All rights reserved.

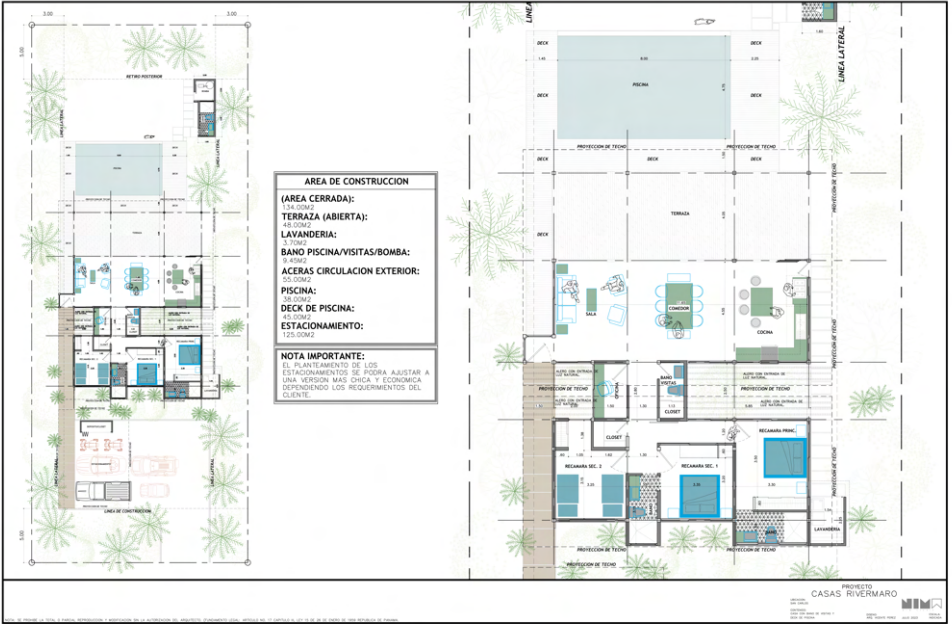


Modelo O´AHU



The images shown in this presentation are for illustrative purposes only; all graphical and textual information is subject to change without prior notice. Dimensions and furniture are approximate representations and do not constitute a contract or guarantee. All rights reserved.



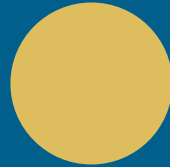


O'AHU Model

- ✓ Subtotal: 365 m2
- ✓ 235 m2 closed area
- ✓ 3 bedrooms with closets
- ✓ 2 1/2 bathrooms
- ✓ Home office
- ✓ Laundry area/closet
- ✓ Exterior storage
- ✓ Individual water tank
- ✓ Polished concrete floors
- ✓ Parking area
- ✓ Basic gardening included

Optional

- ✓ Roofed Parking \$25,000
- ✓ Pool \$51,500
- ✓ Deck \$25,500



From:

\$241,000 on a **600 m2** lot

\$273,000 on a **1,000 m2** lot

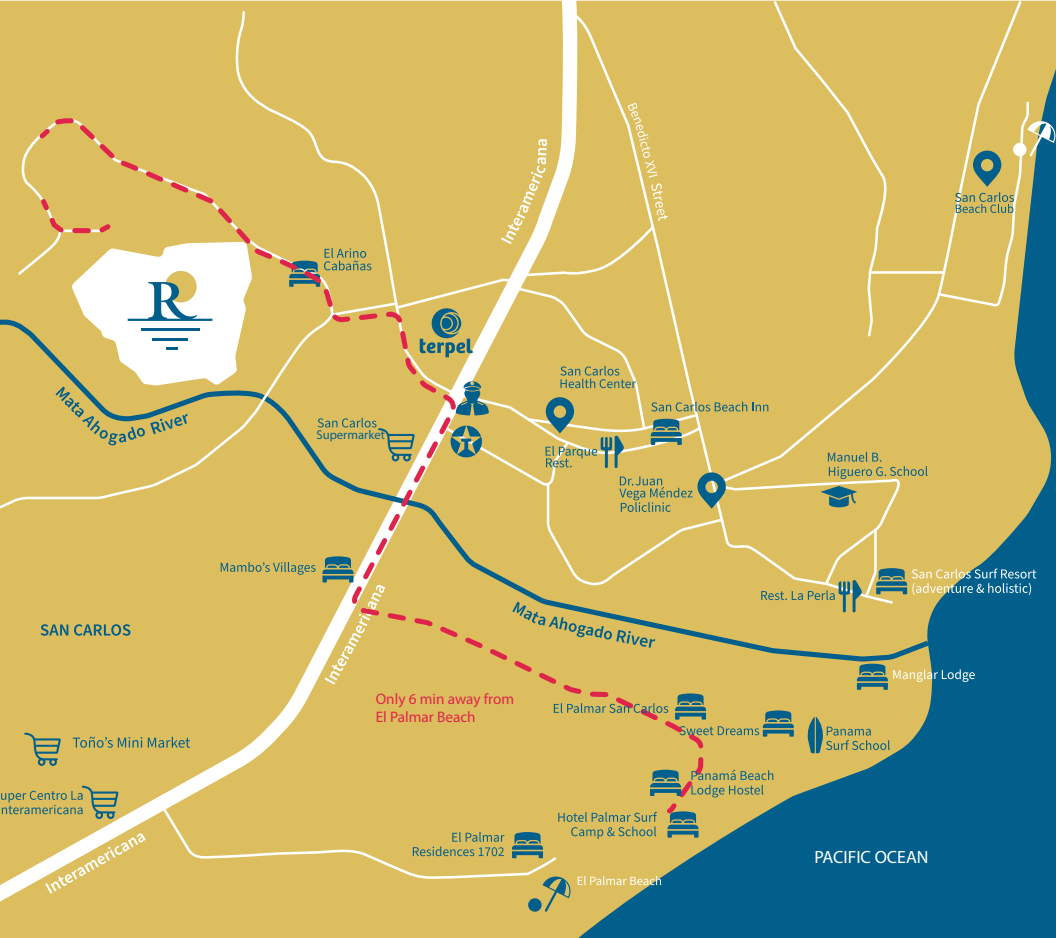
Prices subject to verification before starting construction.



WITH ONLY
55 NEIGHBORS
IT'S POSSIBLE TO CREATE
COMMUNITY!

- * With just 55 neighbors, it's possible to build a community.
- * From 600 to 1,200 m²
- * Project with condominium regulations





Less than
minutes to Rivermaro

10

More than
surf and beach spots



Rivermaro is supported by Fabrika Urbana.



ECOGARDENS

Un estilo de vida basado en valores



Contact us:
+507 6257-4673
ventas@fabrikaurbana.com



FABRIKA URBANA

+15 years
of experience in the
real estate sector..

Our latest project, Ecogardens, located in Arraiján, is the first housing project with bioclimatic architecture in the area, which includes a forest reserve.

We are affiliated with:

