



RIVERMARO

SAN CARLOS

Playa El Palmar



Fun and beach for the family



2 km away from the beach



Quick access to the river



**YOU NEED
A BIT MORE OF**

*Jungle in
your Life*



FABRIKA URBANA



RIVERMARO is a Country Houses project with 55 houses ranging from 600 m² to 1,200 m² located 4 minutes away from El Palmar Beach and only 1.5 hours from Panama City, situated in a premium area of San Carlos.

- Just 2 km away from El Palmar Beach
- Close to restaurants and other points of interest
- Only 3 minutes from the Inter-American Highway
- Well-maintained access roads
- Opportunity to choose the design of your future home

PRE-SALE price starting from:

\$140,700



AMENITIES

- Perimeter fencing with gated access
- Lots with views of the River, Mountains, and towards El Palmar
- Social area with swimming pool



The maintenance fee will start at \$90.00 per month and will increase according to needs.

Kauai Model



The images shown in this presentation are for illustrative purposes only; all graphical and textual information is subject to change without prior notice.
Dimensions and furniture are approximate representations and do not constitute a contract or guarantee.
All rights reserved.





Kauai Model:

66.30 m2 closed area

17.90 m2 open area

84.20 m2 total excluding parking

- ✓ 2 bedrooms
- ✓ 1 full bathroom
- ✓ Terrace
- ✓ Parking area
- ✓ Kitchen
- ✓ Individual water tank
- ✓ Living room
- ✓ Concrete polished floor
- ✓ Basic gardening included

Optional:

- ✓ Pool \$16,700
- ✓ Deck with Solid Teak \$20,700
- ✓ Covered Parking \$20,500

Price starting from **\$140,700** on a **600 m2** lot.

Price starting from **\$164,000** on a **1000 m2** lot.

Modelo O'AHU



The images shown in this presentation are for illustrative purposes only; all graphical and textual information is subject to change without prior notice.
Dimensions and furniture are approximate representations and do not constitute a contract or guarantee.
All rights reserved.

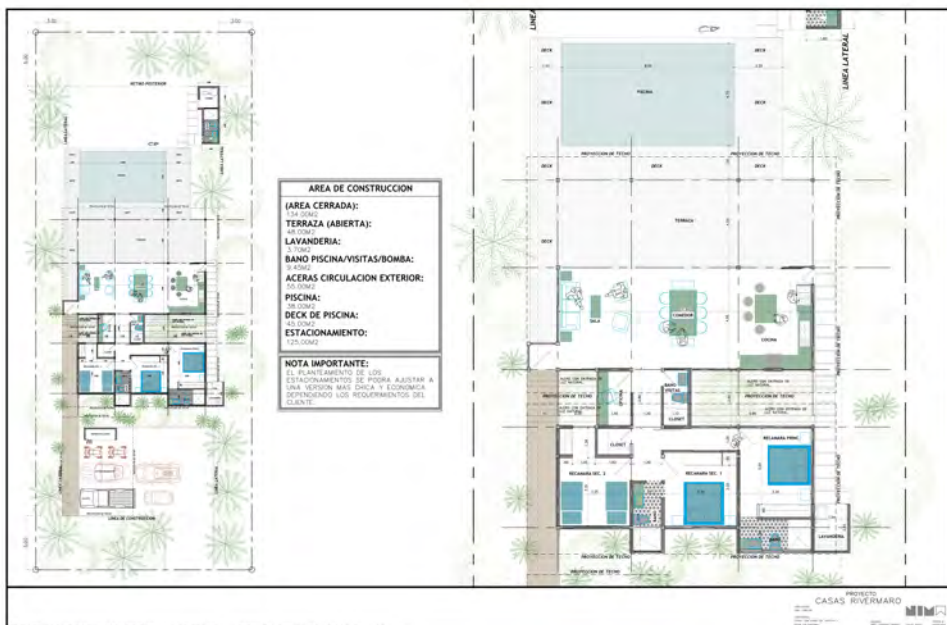


Modelo O´AHU



The images shown in this presentation are for illustrative purposes only; all graphical and textual information is subject to change without prior notice. Dimensions and furniture are approximate representations and do not constitute a contract or guarantee. All rights reserved.





O'AHU Model

- ✓ Subtotal: 365 m²
- ✓ 235 m² closed area
- ✓ 3 bedrooms with closets
- ✓ 2 1/2 bathrooms
- ✓ Home office
- ✓ Laundry area/closet
- ✓ Exterior storage
- ✓ Individual water tank
- ✓ Polished concrete floors
- ✓ Parking area
- ✓ Basic gardening included

From:

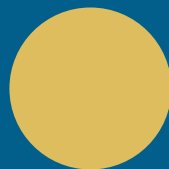
\$246,000 on a **600 m²** lot

\$278,000 on a **1,000 m²** lot

Prices subject to verification before starting construction.

Optional

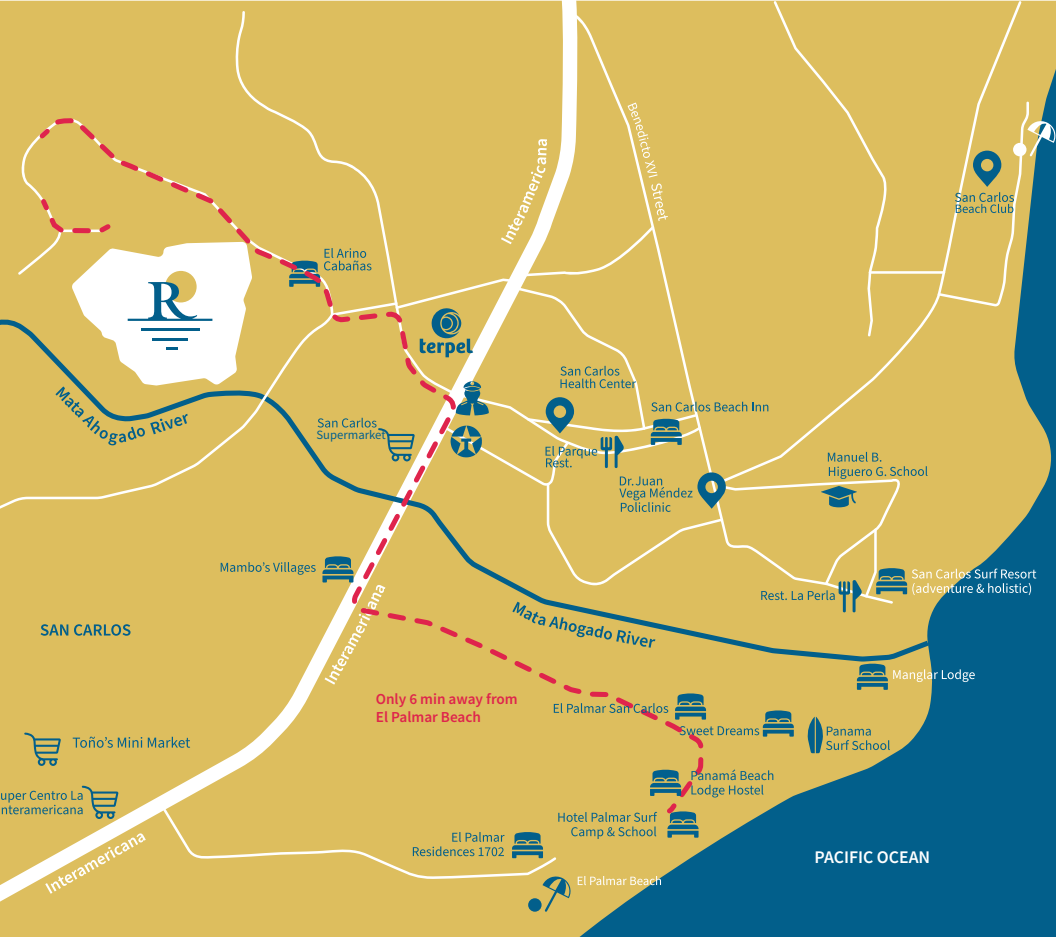
- ✓ Roofed Parking
\$30,000
- ✓ Pool \$56,500
- ✓ Deck \$30,500





WITH ONLY 55 NEIGHBORS IT'S POSSIBLE TO CREATE COMMUNITY!

- * With just 55 neighbors, it's possible to build a community.
- * From 600 to 1,200 m²
- * Project with condominium regulations



Less than
minutes to Rivermaro

10

More than
surf and beach spots



Rivermaro is supported by Fabrika Urbana.



Contact us:
+507 6257-4673
ventas@fabrikaurbana.com



FABRIKA URBANA

+15 years
of experience in the
real estate sector..

Our latest project, Ecogardens, located in Arraiján, is the first housing project with bioclimatic architecture in the area, which includes a forest reserve.

We are affiliated with:

